

1 **GROUND PLAN**
Scale: 1/8" = 1'-0"



University of Alabama
School of Theatre and Dance
Allen Bales Theatre

Teila Vochatzer
SCENIC DESIGNER

MARISOL
GROUND PLAN

Directed by
Lighting Designer
Sound Designer
Technical Director

Scale
1/8" = 1'

General Notes

1. PLATFORMS SHOULD LOOK AS THOUGH THEY ARE FLOATING.
2. DIFFERENT PROPS AND SCENIC ELEMENTS WILL BE BROUGHT OUT BY ACTORS.
3. SOFT GOODS WILL BE CREATED OUT OF FOUND FABRIC.

This drawing is confidential. The reproduction or use of ideas, arrangements, designs, and plans are prohibited without written consent of Teila Vochatzer.

Written dimensions will always override scale should a conflict arise.

Responsibility falls solely on the vendors to notify Teila Vochatzer of any discrepancies between this drawing and actual dimensions.

This drawing represents concepts and suggestions only. The design team is not responsible nor held liable for the structural, mechanical or electrical execution of this drawing. Any structural components within this drawing must be approved by a qualified engineer before installation begins. Furthermore any other work done is to be performed by qualified personnel only.

Equipment and installation must conform to all local and federal codes and fire safety regulations.

Plate No.

1 OF 5

September 9, 2021



University of Alabama
School of Theatre and Dance
Allen Bales Theatre

Teila Vochatzer
SCENIC DESIGNER

MARISOL
SECTION

Directed by

Lighting Designer

Sound Designer

Technical Director

Scale
3/16" = 1'

General Notes

This drawing is confidential. The reproduction or use of ideas, arrangements, designs, and plans are prohibited without written consent of Teila Vochatzer.

Written dimensions will always override scale should a conflict arise.

Responsibility falls solely on the vendors to notify Teila Vochatzer of any discrepancies between this drawing and actual dimensions.

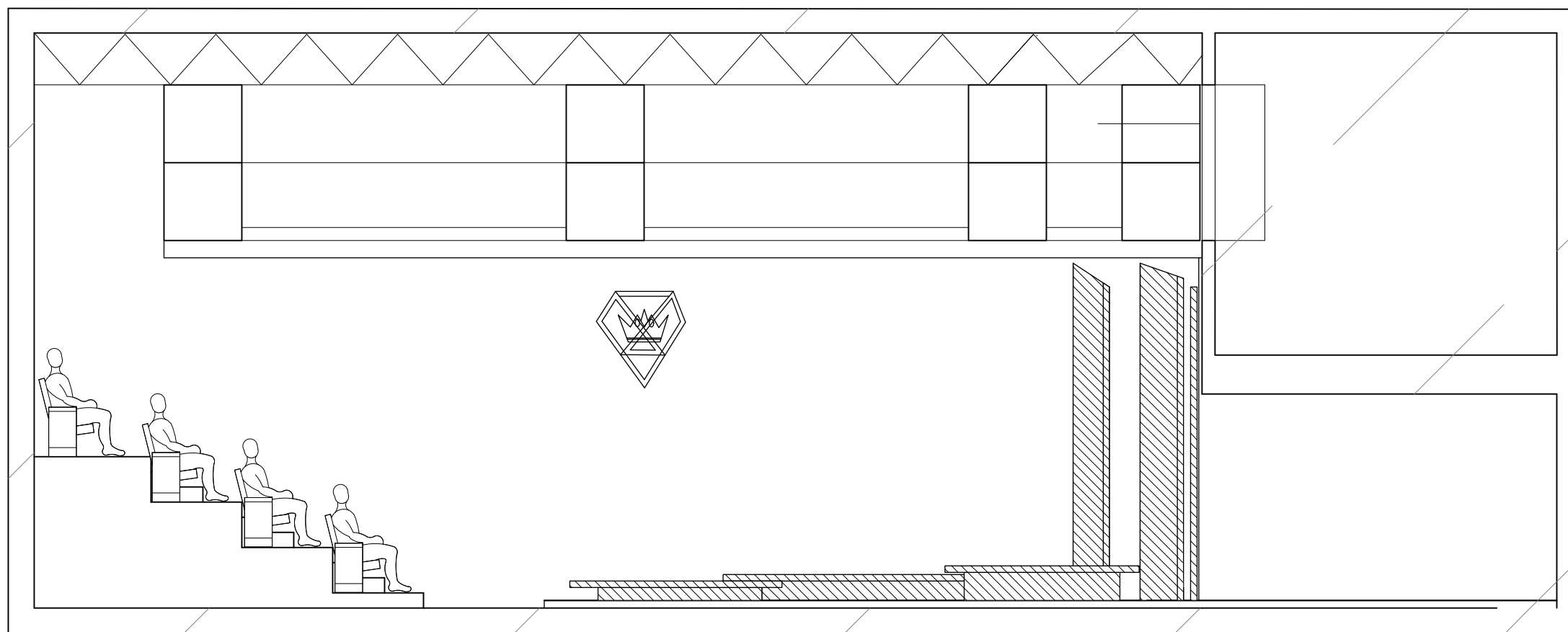
This drawing represents concepts and suggestions only. The design team is not responsible nor held liable for the structural, mechanical or electrical execution of this drawing. Any structural components within this drawing must be approved by a qualified engineer before installation begins. Furthermore any other work done is to be performed by qualified personnel only.

Equipment and installation must conform to all local and federal codes and fire safety regulations.

Plate No.

2 OF 5

September 9, 2021



Scale: 3/16" = 1'-0"
Section View





University of Alabama
School of Theatre and Dance
Allen Bales Theatre

Teila Vochatzer
SCENIC DESIGNER

MARISOL

WALLS A-E

Directed by

Lighting Designer

Sound Designer

Technical Director

Scale
1/4" = 1'

General Notes

1. WALLS WILL BE TEXTURED WITH DIFFERENT MATERIALS.

This drawing is confidential. The reproduction or use of ideas, arrangements, designs, and plans are prohibited without written consent of Teila Vochatzer.

Written dimensions will always override scale should a conflict arise.

Responsibility falls solely on the vendors to notify Teila Vochatzer of any discrepancies between this drawing and actual dimensions.

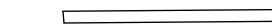
This drawing represents concepts and suggestions only. The design team is not responsible nor held liable for the structural, mechanical or electrical execution of this drawing. Any structural components within this drawing must be approved by a qualified engineer before installation begins. Furthermore any other work done is to be performed by qualified personnel only.

Equipment and installation must conform to all local and federal codes and fire safety regulations.

Plate No.

3 OF 5

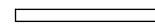
September 9, 2021



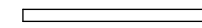
1 **WALL A TOP VIEW**
Scale: 1/4" = 1'-0"



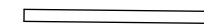
2 **WALL B TOP VIEW**
Scale: 1/4" = 1'-0"



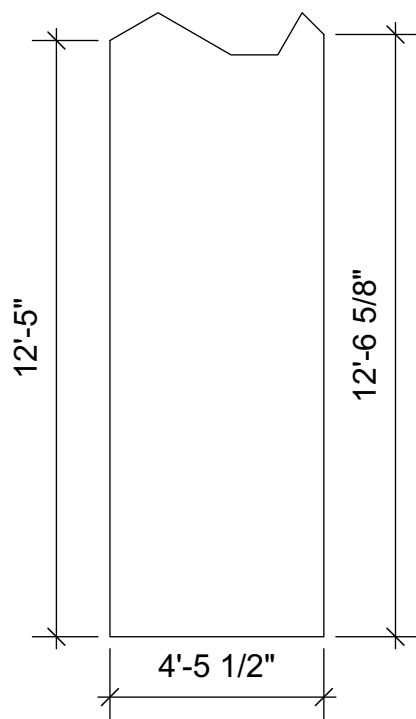
3 **WALL C TOP VIEW**
Scale: 1/4" = 1'-0"



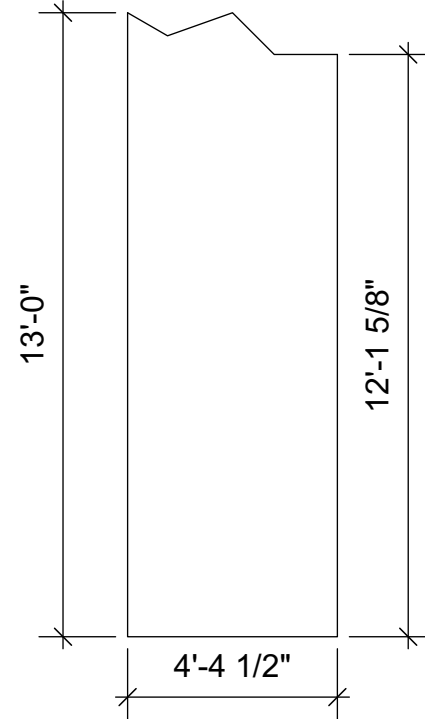
4 **WALL D TOP VIEW**
Scale: 1/4" = 1'-0"



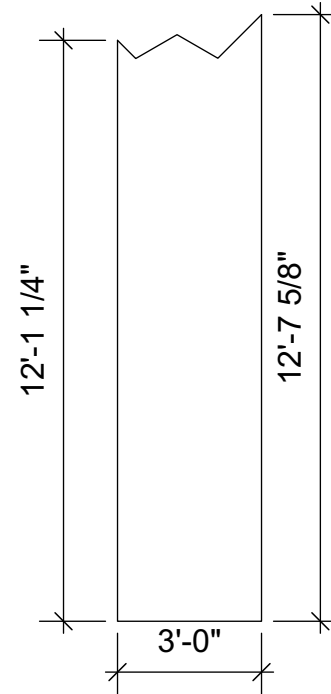
5 **WALL E TOP VIEW**
Scale: 1/4" = 1'-0"



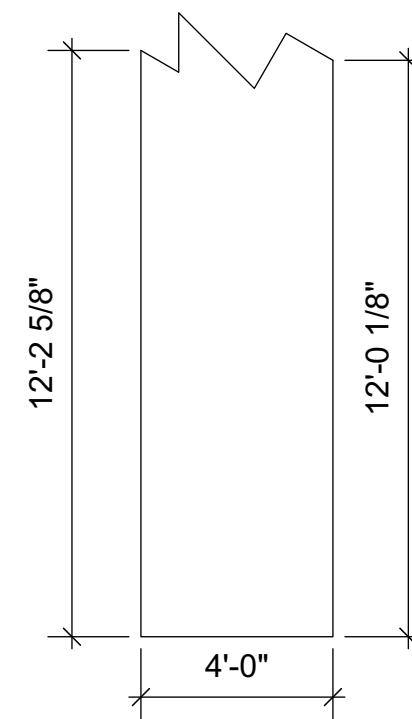
6 **WALL B FRONT VIEW**
Scale: 1/4" = 1'-0"



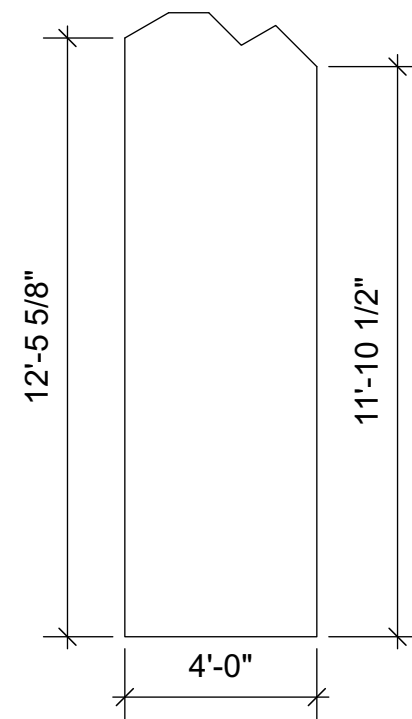
7 **WALL A FRONT VIEW**
Scale: 1/4" = 1'-0"



8 **WALL C FRONT VIEW**
Scale: 1/4" = 1'-0"



9 **WALL D FRONT VIEW**
Scale: 1/4" = 1'-0"



10 **WALL E FRONT VIEW**
Scale: 1/4" = 1'-0"



University of Alabama
School of Theatre and Dance
Allen Bales Theatre

Teila Vochatzer
SCENIC DESIGNER

MARISOL
PLATFORMS A-C

Directed by

Lighting Designer

Sound Designer

Technical Director

Scale
1/4" = 1'

General Notes

1. PLATFORMS SHOULD LOOK AS IF THEY ARE FLOATING.
2. LIDS SHOULD BE MADE OUT OF WOOD PLANKS.

This drawing is confidential. The reproduction or use of ideas, arrangements, designs, and plans are prohibited without written consent of Teila Vochatzer.

Written dimensions will always override scale should a conflict arise.

Responsibility falls solely on the vendors to notify Teila Vochatzer of any discrepancies between this drawing and actual dimensions.

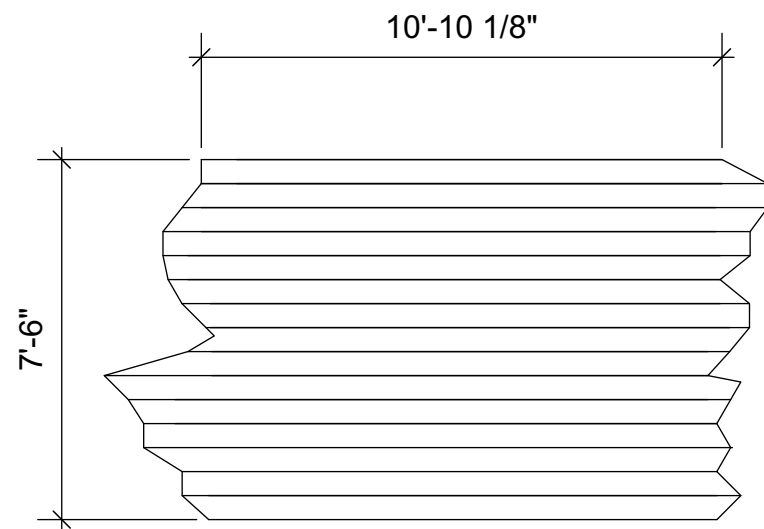
This drawing represents concepts and suggestions only. The design team is not responsible nor held liable for the structural, mechanical or electrical execution of this drawing. Any structural components within this drawing must be approved by a qualified engineer before installation begins. Furthermore any other work done is to be performed by qualified personnel only.

Equipment and installation must conform to all local and federal codes and fire safety regulations.

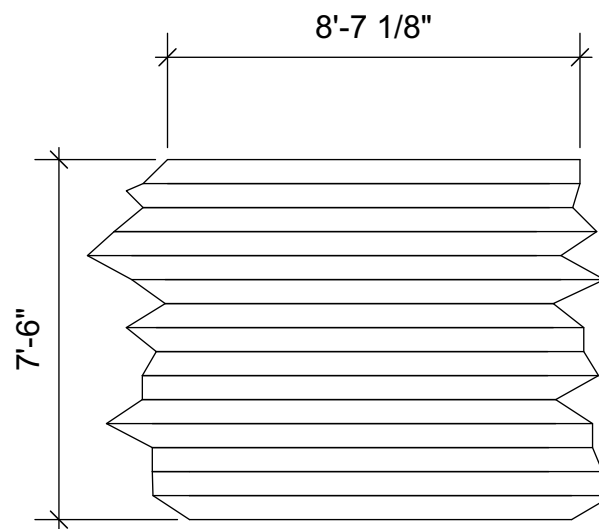
Plate No.

4 OF 5

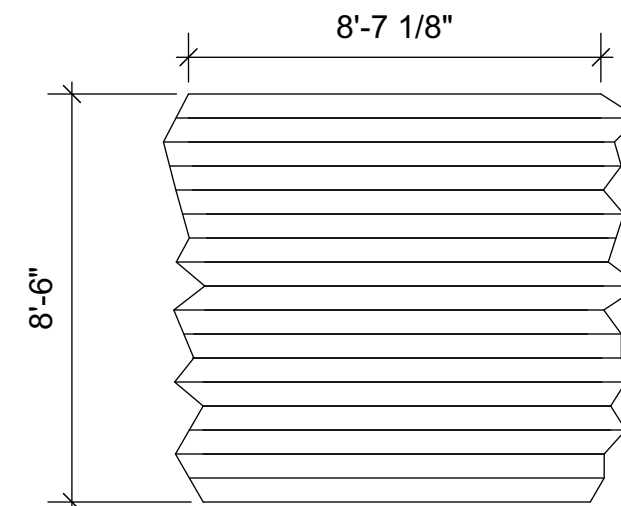
September 9, 2021



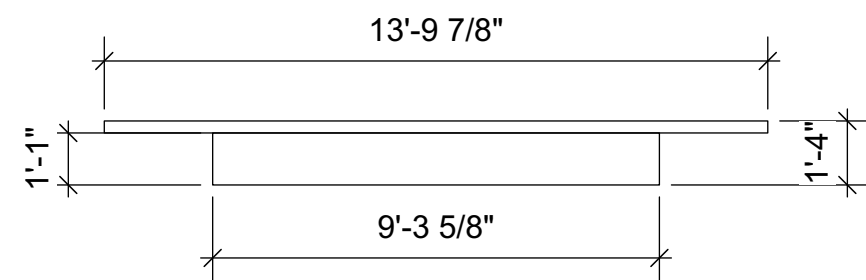
1 PLATFORM A TOP VIEW
Scale: 1/4" = 1'-0"



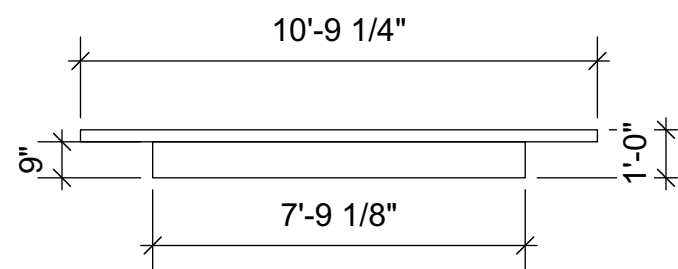
2 PLATFORM B TOP VIEW
Scale: 1/4" = 1'-0"



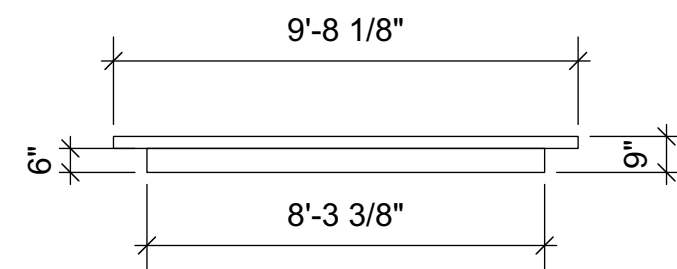
3 PLATFORM C TOP VIEW
Scale: 1/4" = 1'-0"



4 PLATFORM A FRONT VIEW
Scale: 1/4" = 1'-0"



5 PLATFORM B FRONT VIEW
Scale: 1/4" = 1'-0"



6 PLATFORM C FRONT VIEW
Scale: 1/4" = 1'-0"



University of Alabama
School of Theatre and Dance
Allen Bales Theatre

Teila Vochatzer
SCENIC DESIGNER

MARISOL

CROWN

Directed by

Lighting Designer

Sound Designer

Technical Director

Scale
1/2" = 1'

General Notes

1. SHOULD BE BUILT FROM FOUND METAL.

This drawing is confidential. The reproduction or use of ideas, arrangements, designs, and plans are prohibited without written consent of Teila Vochatzer.

Written dimensions will always override scale should a conflict arise.

Responsibility falls solely on the vendors to notify Teila Vochatzer of any discrepancies between this drawing and actual dimensions.

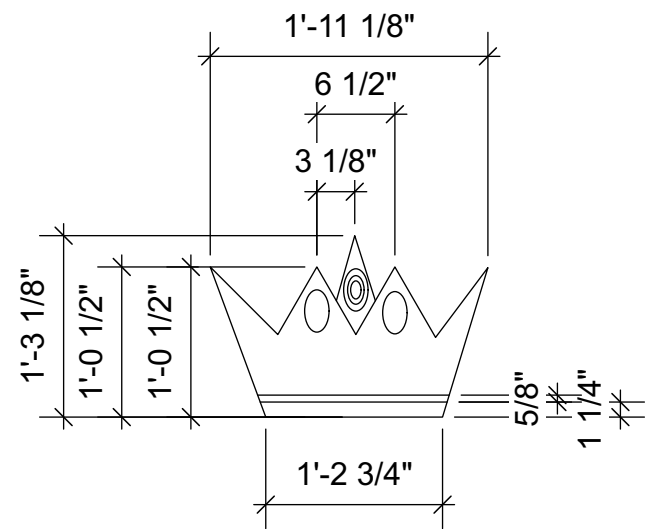
This drawing represents concepts and suggestions only. The design team is not responsible nor held liable for the structural, mechanical or electrical execution of this drawing. Any structural components within this drawing must be approved by a qualified engineer before installation begins. Furthermore any other work done is to be performed by qualified personnel only.

Equipment and installation must conform to all local and federal codes and fire safety regulations.

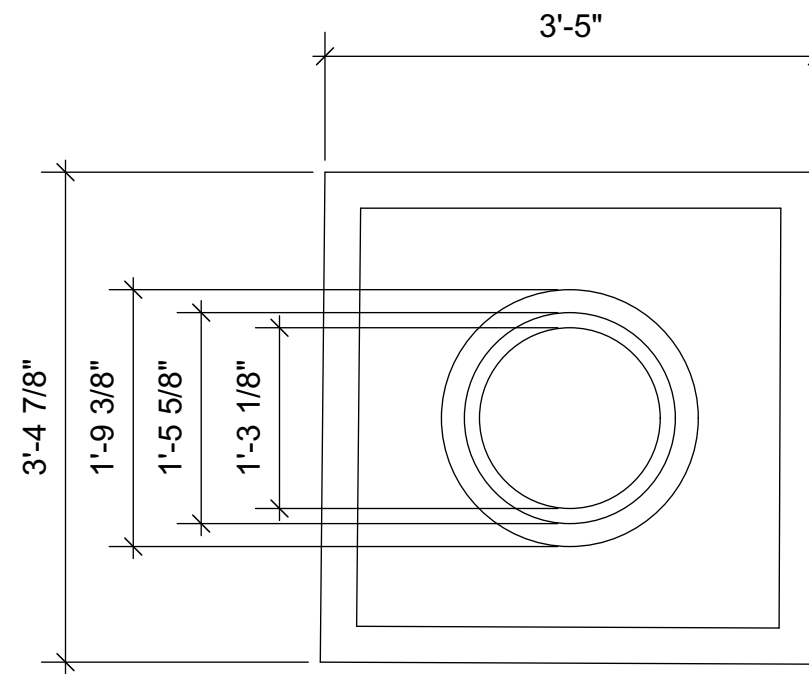
Plate No.

5 OF 5

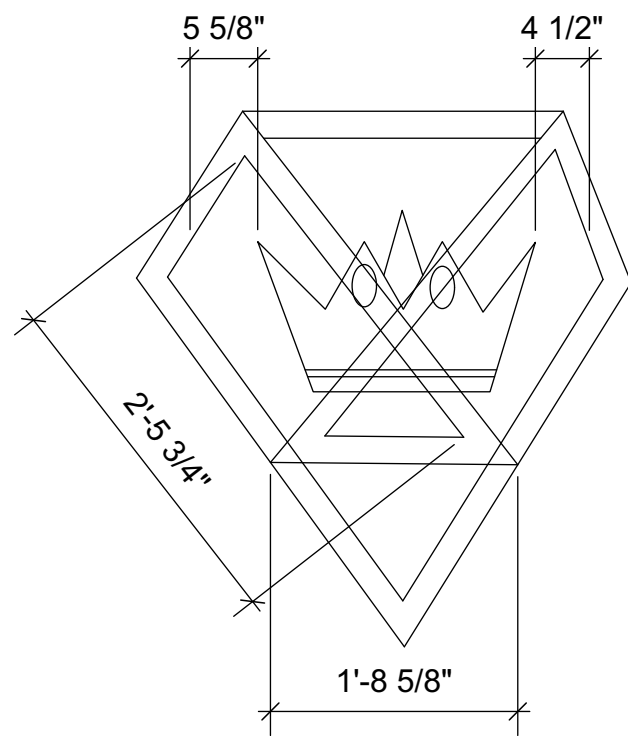
Septemeber 9, 2021



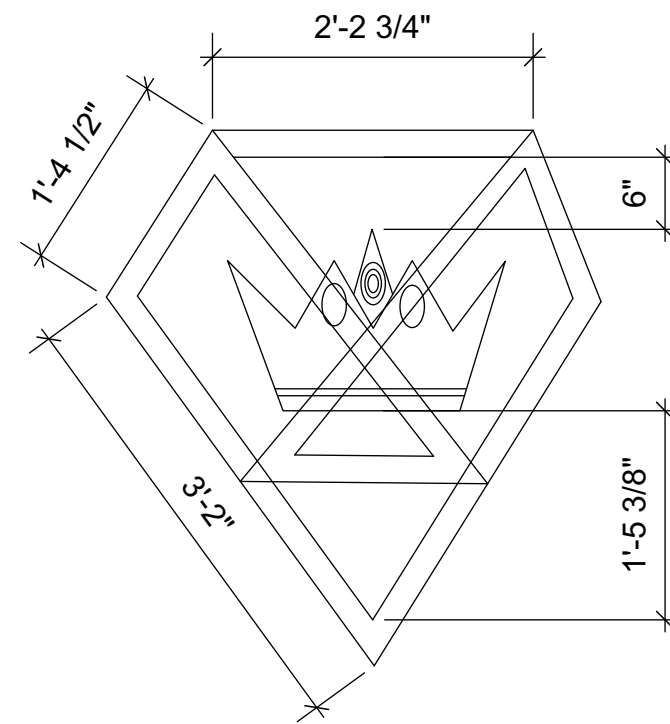
1 **CROWN DETAIL**
Scale: 3/4" = 1'-0"



4 **CROWN TOP VIEW**
Scale: 3/4" = 1'-0"



3 **CROWN SIDE VIEW**
Scale: 3/4" = 1'-0"



2 **CROWN FRONT VIEW**
Scale: 3/4" = 1'-0"