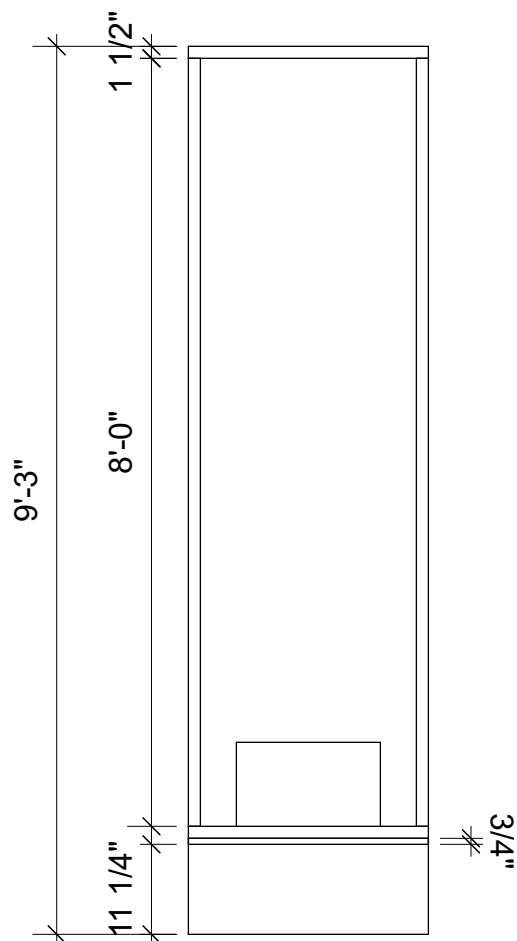
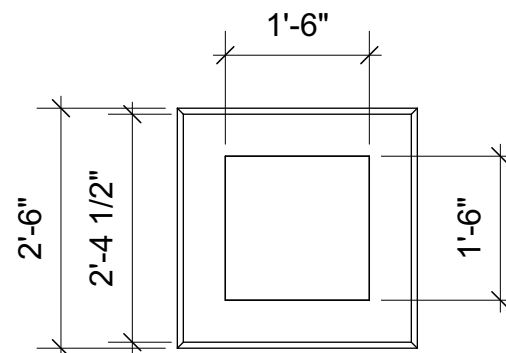


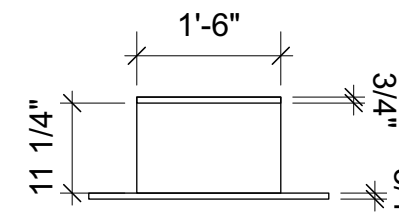
1 **ISO View**
Scale: 1/2" = 1'-0"



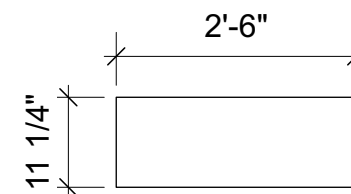
2 **Front/Side View**
Scale: 1/2" = 1'-0"



3 **Top View**
Scale: 1/2" = 1'-0"



4 **Front/Side View of Permanent Base**
Scale: 1/2" = 1'-0"



5 **Side View of Removable Base**
Scale: 1/2" = 1'-0"

Build 3



Central City Opera
Hudson Gardens

Teila Vochatzer
Props Master

Rigoletto
Mannequin Boxes

Directed by
Jose Maria Condem

Scenic Designer
Steven Kemp

Lighting Designer
David Jacques

Technical Director
Kerry Cripe

Scale
1/2" = 1'

General Notes

1. Frame built out of 1x2 box tube, all corner joints mitered @ a 45.
2. Permanent base built out of 3/4" ply, all corner joints mitered @ a 45.
3. Removable base built out of 3/4" ply, all corner joints mitered @ a 45.
4. All corner joints not welded should be glued and screwed.
5. Steel frame should be screwed into wooden permanent base.

This drawing is confidential. The reproduction or use of ideas, arrangements, designs, and plans are prohibited without written consent of Teila Vochatzer.

Written dimensions will always override scale should a conflict arise.

Responsibility falls solely on the vendors to notify Teila Vochatzer of any discrepancies between this drawing and actual dimensions.

This drawing represents concepts and suggestions only. The design team is not responsible nor held liable for the structural, mechanical or electrical execution of this drawing. Any structural components within this drawing must be approved by a qualified engineer before installation begins. Furthermore any other work done is to be performed by qualified personnel only.

Equipment and installation must conform to all local and federal codes and fire safety regulations.

Plate No.

1 OF 1

June 7, 2021