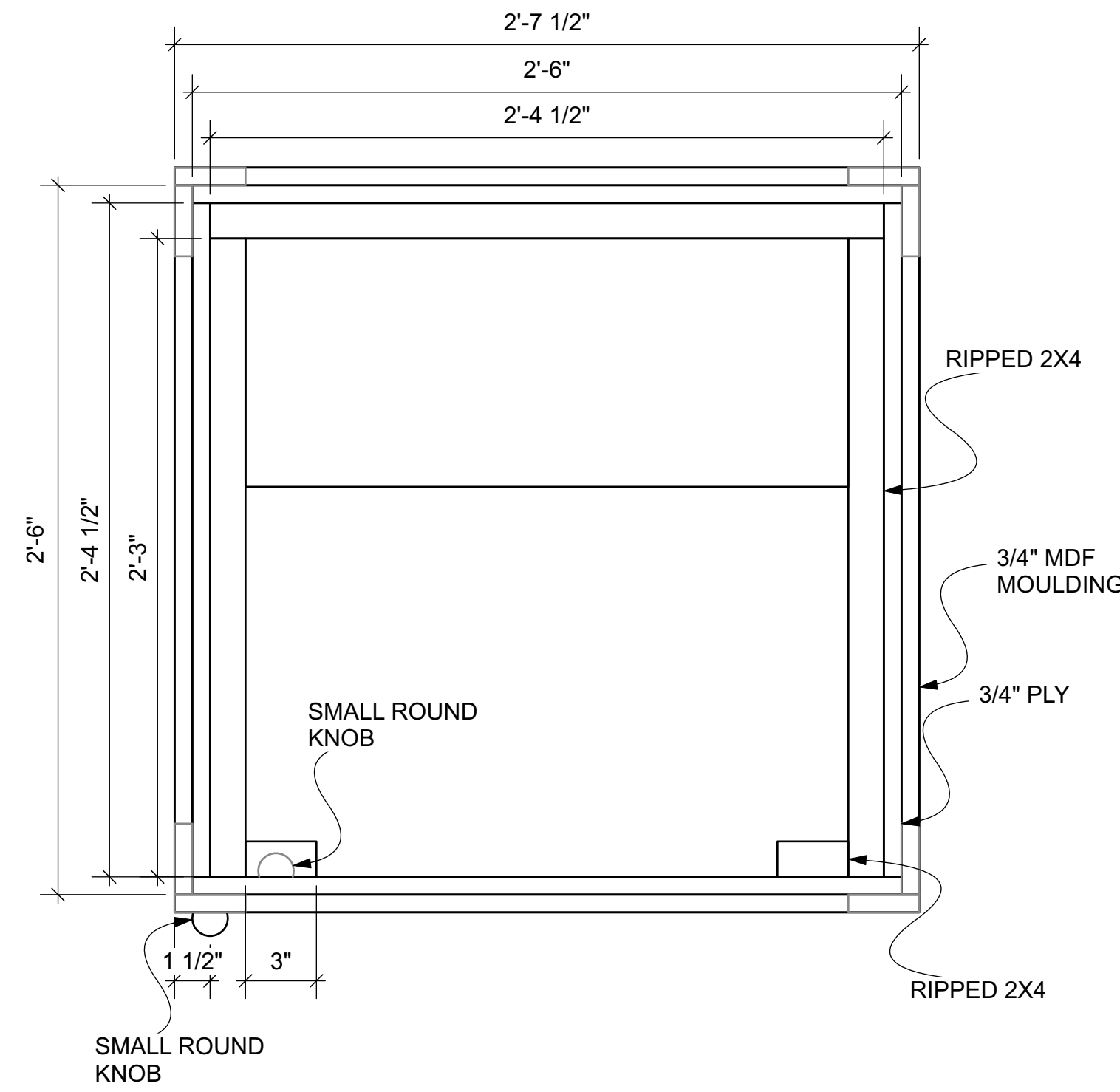
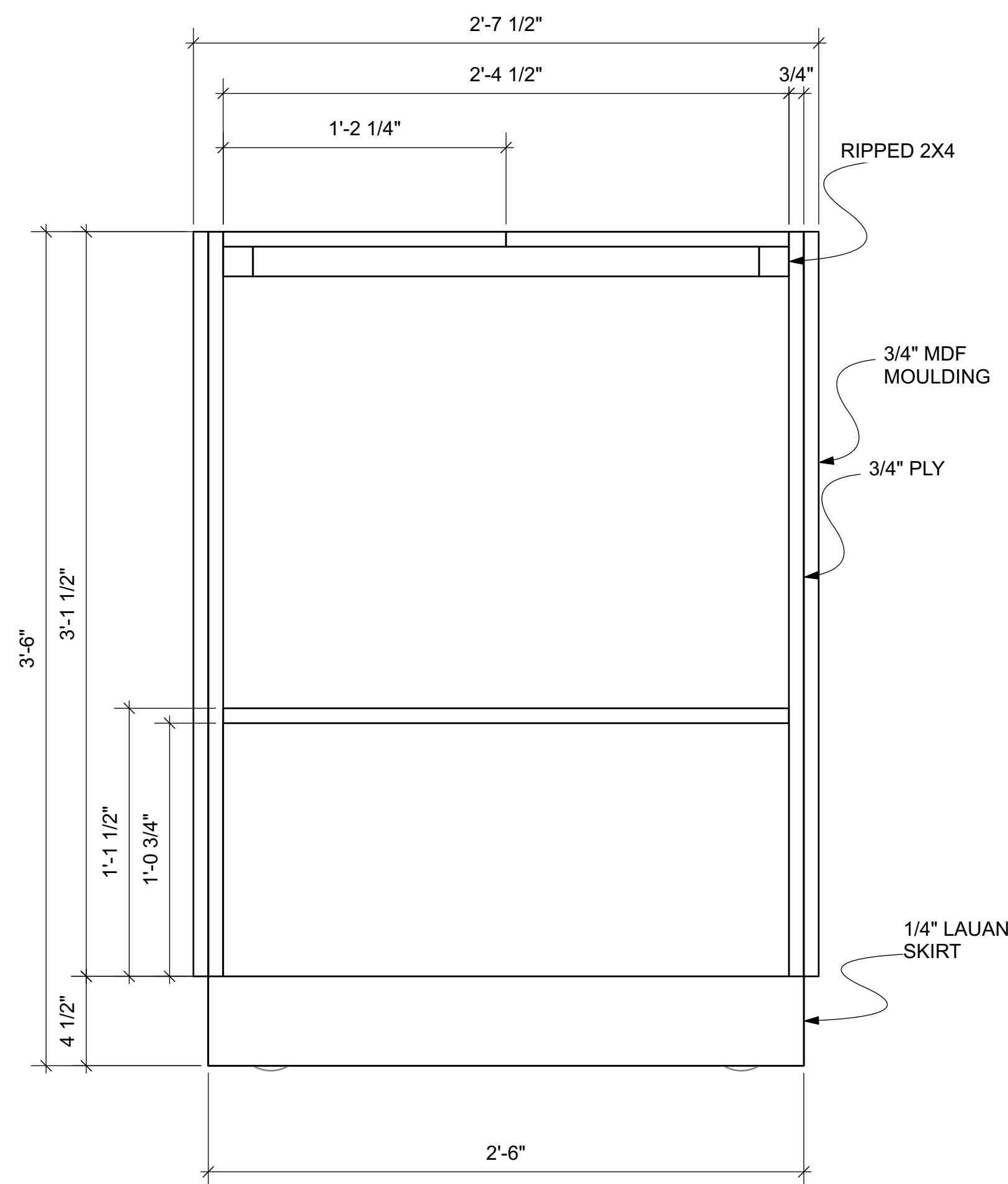


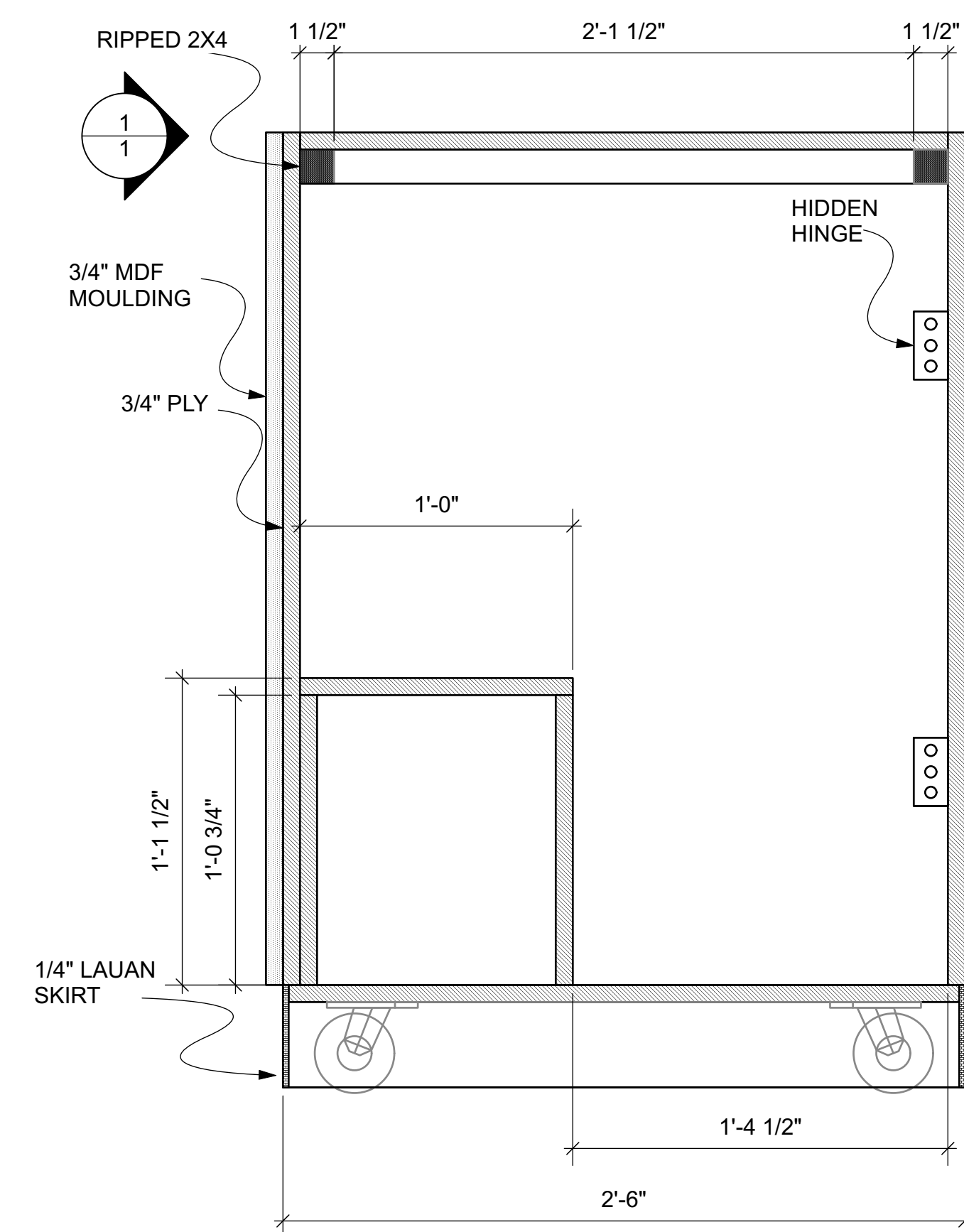
1 TOP VIEW
Scale: 2" = 1'-0"



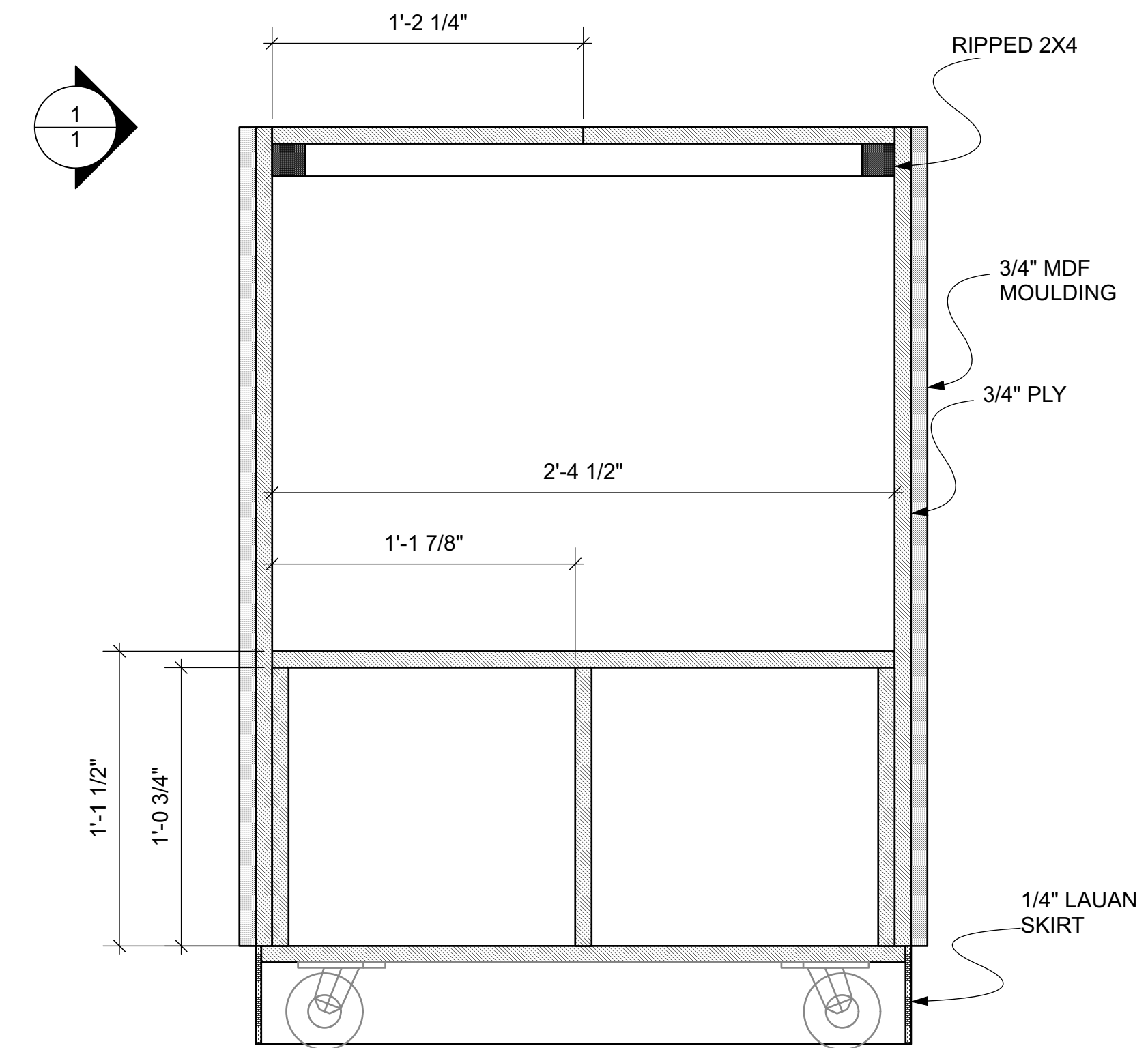
5 TOP VIEW W/ DIMENSIONS
Scale: 2" = 1'-0"



2 FRONT VIEW W/O DOOR
Scale: 2" = 1'-0"



3 SIDE SECTION VIEW
Scale: 2" = 1'-0"



4 FRONT SECTION VIEW
Scale: 2" = 1'-0"



University of Alabama
School of Theatre and Dance
Marian Gallaway Theatre

Teila Vochatzer
PROPS DIRECTOR

**THE COLORED
MUSEUM
VANITY UNITS
FRAME**

Directed by
Christian Tripp

Scenic Designer
Soledad Sanchez

Lighting Designer
David Page

Technical Director
Matthew Stratton

Scale
2" = 1'

General Notes

1. Should be built out of 3/4" ply, ripped down 2x4 & 1/4" Lauan.
2. Glue & Screw frame.
3. Glue & Staple skirt.
4. Castors being used should be 4" tall.
5. Overlay Concealed Hinges will be used.
6. All screws should be puttied over & sanded.
7. Do not attach moulding until fabric is adhered.
8. Build 2
9. If you have any questions, talk to Teila.

This drawing is confidential. The reproduction or use of ideas, arrangements, designs, and plans are prohibited without written consent of Teila Vochatzer.

Written dimensions will always override scale should a conflict arise.

Responsibility falls solely on the vendors to notify Teila Vochatzer of any discrepancies between this drawing and actual dimensions.

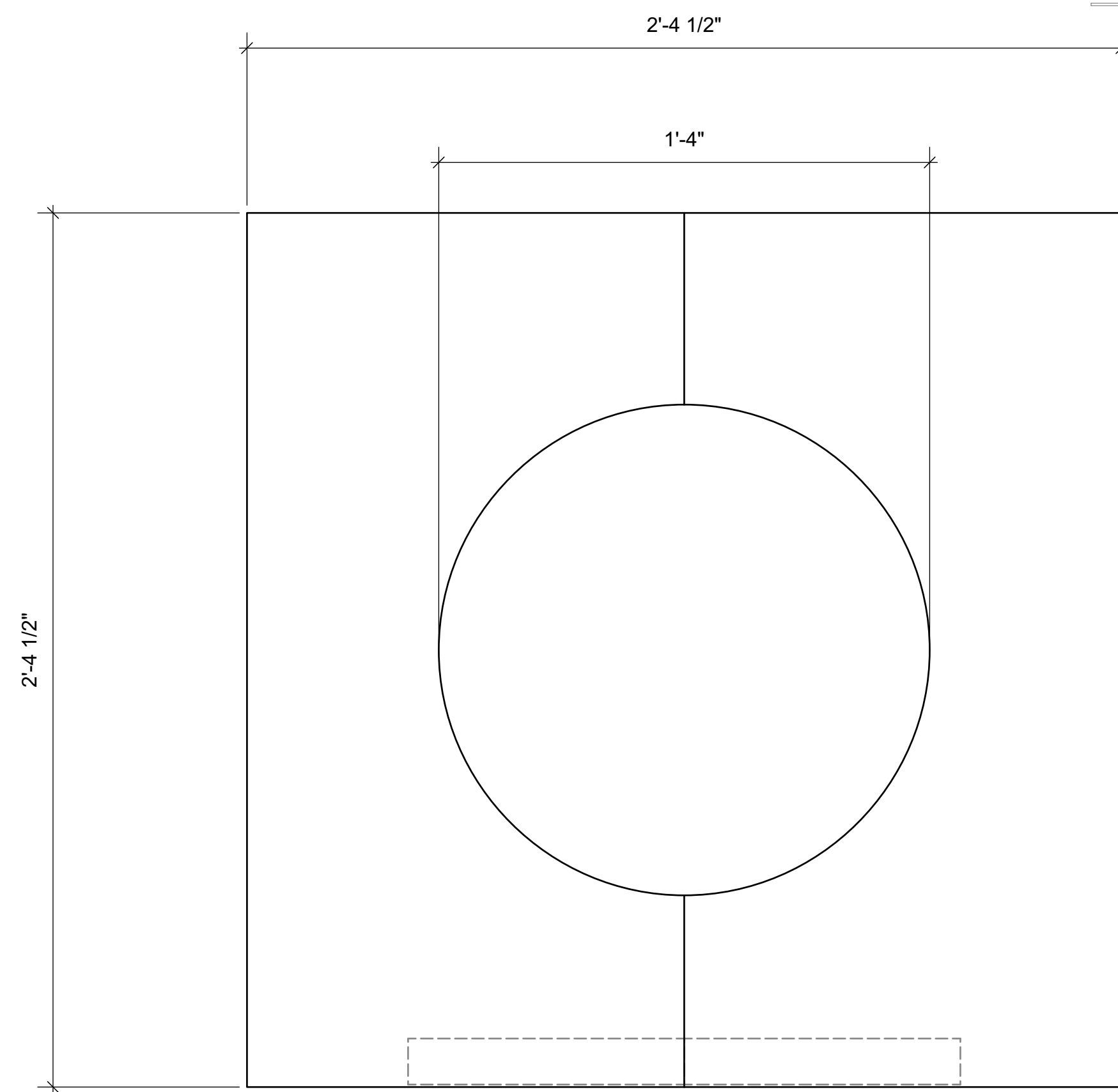
This drawing represents concepts and suggestions only. The design team is not responsible nor held liable for the structural, mechanical or electrical execution of this drawing. Any structural components within this drawing must be approved by a qualified engineer before installation begins. Furthermore any other work done is to be performed by qualified personnel only.

Equipment and installation must conform to all local and federal codes and fire safety regulations.

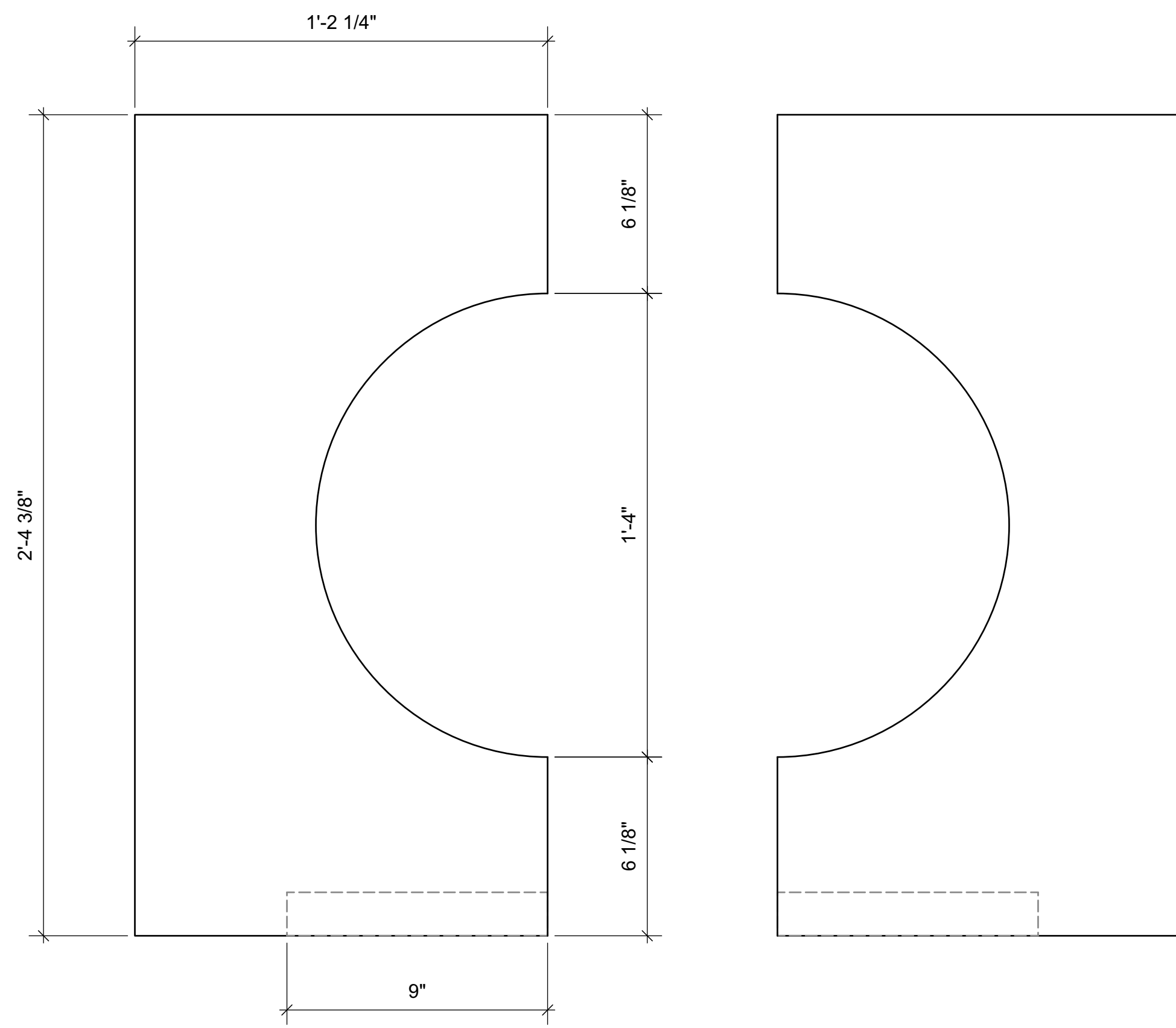
Plate No.

1 OF 4

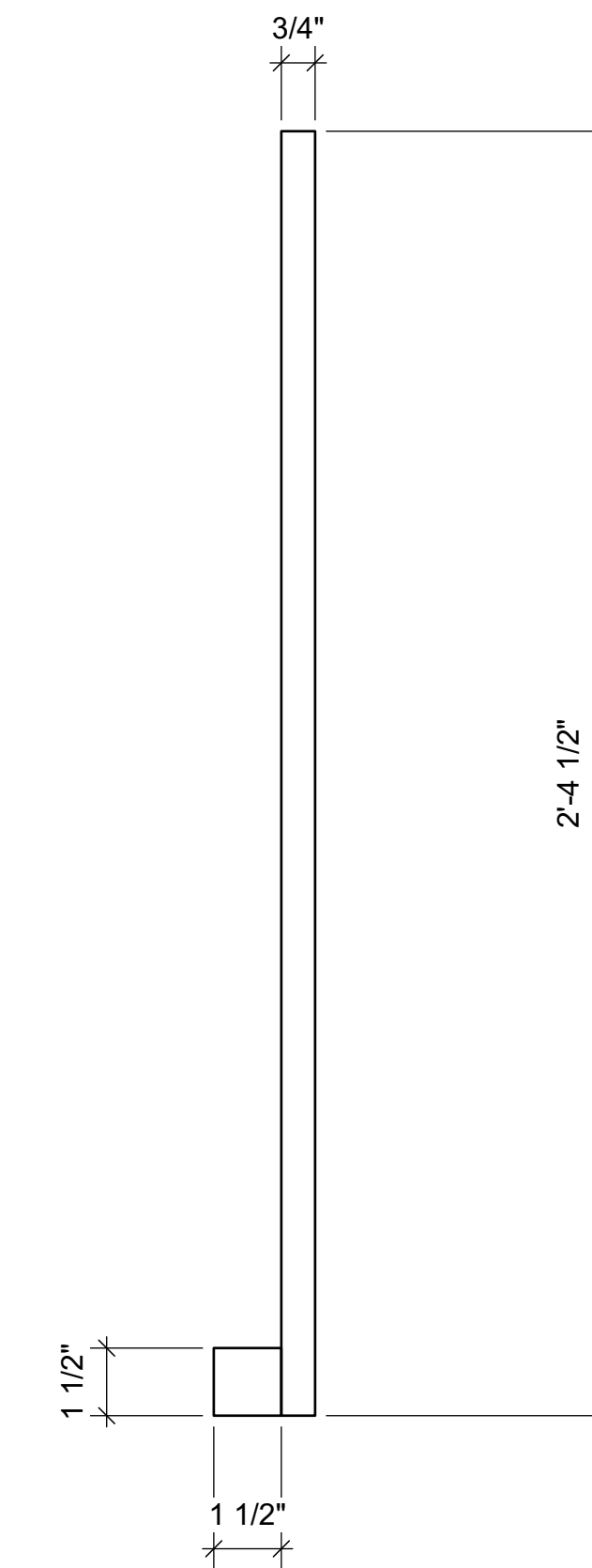
November 4, 2021



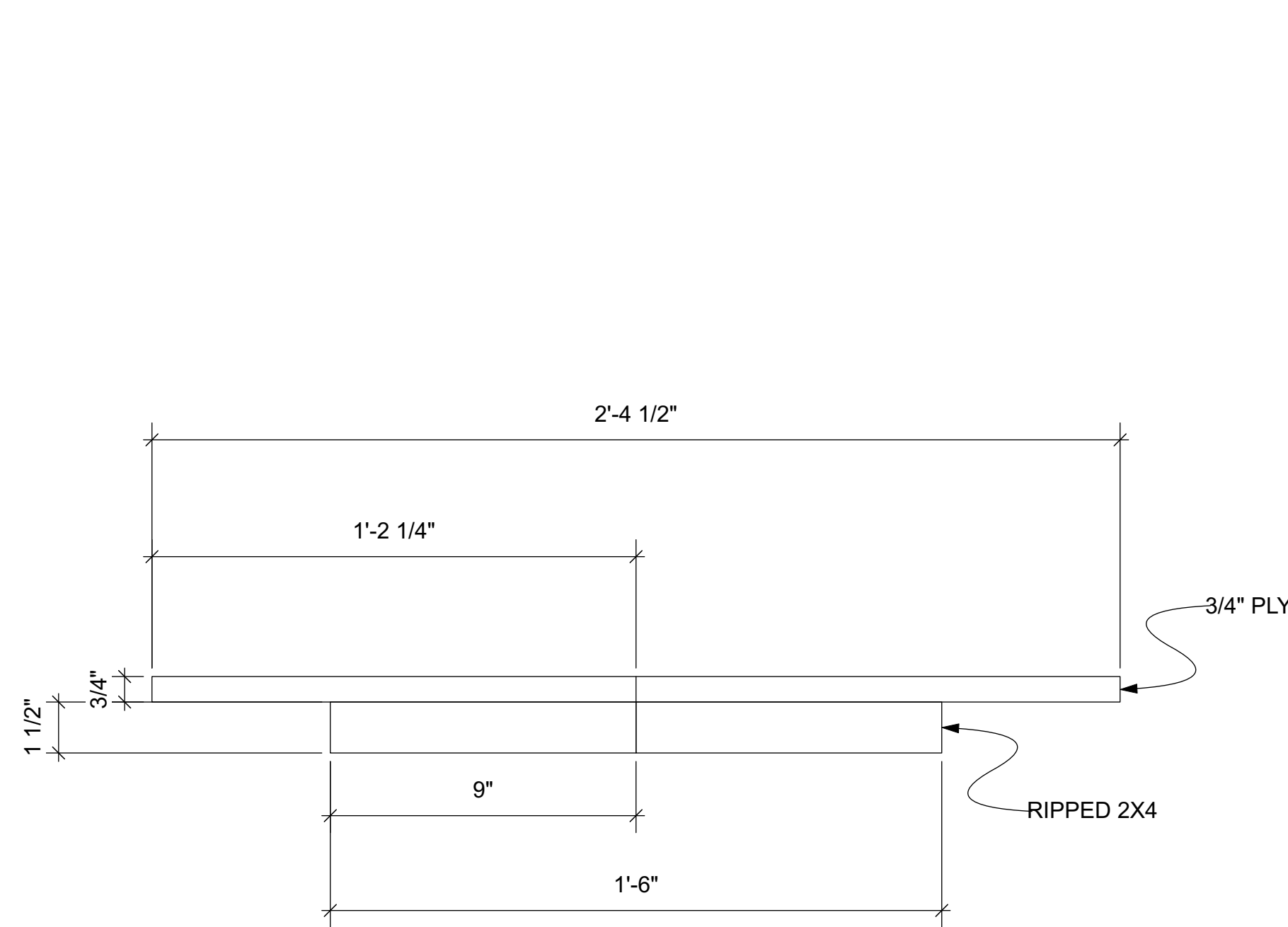
1 TOP VIEW OF LID
Scale: 3" = 1'-0"



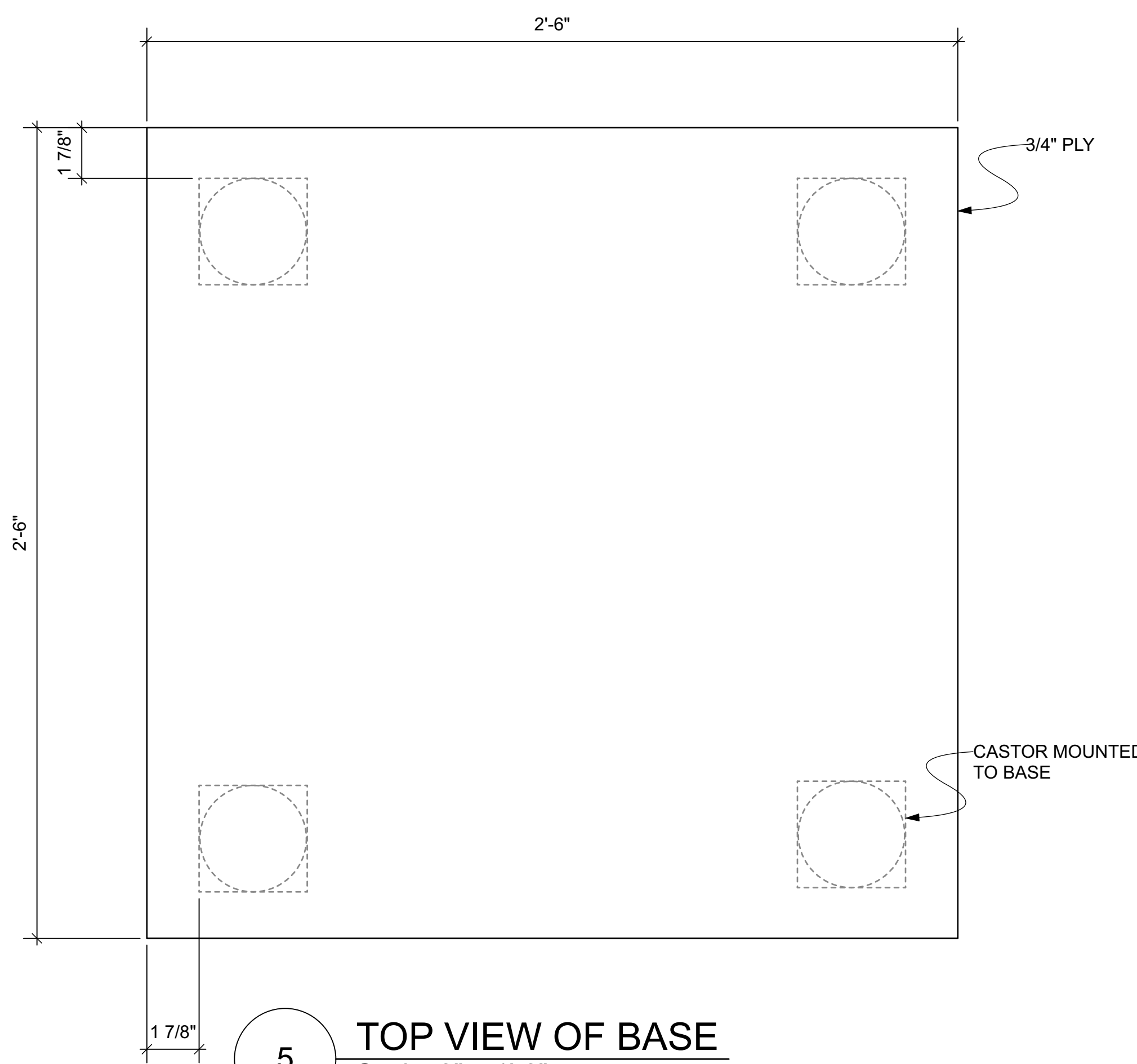
3 TOP VIEW OF LID SEPARATED
Scale: 3" = 1'-0"



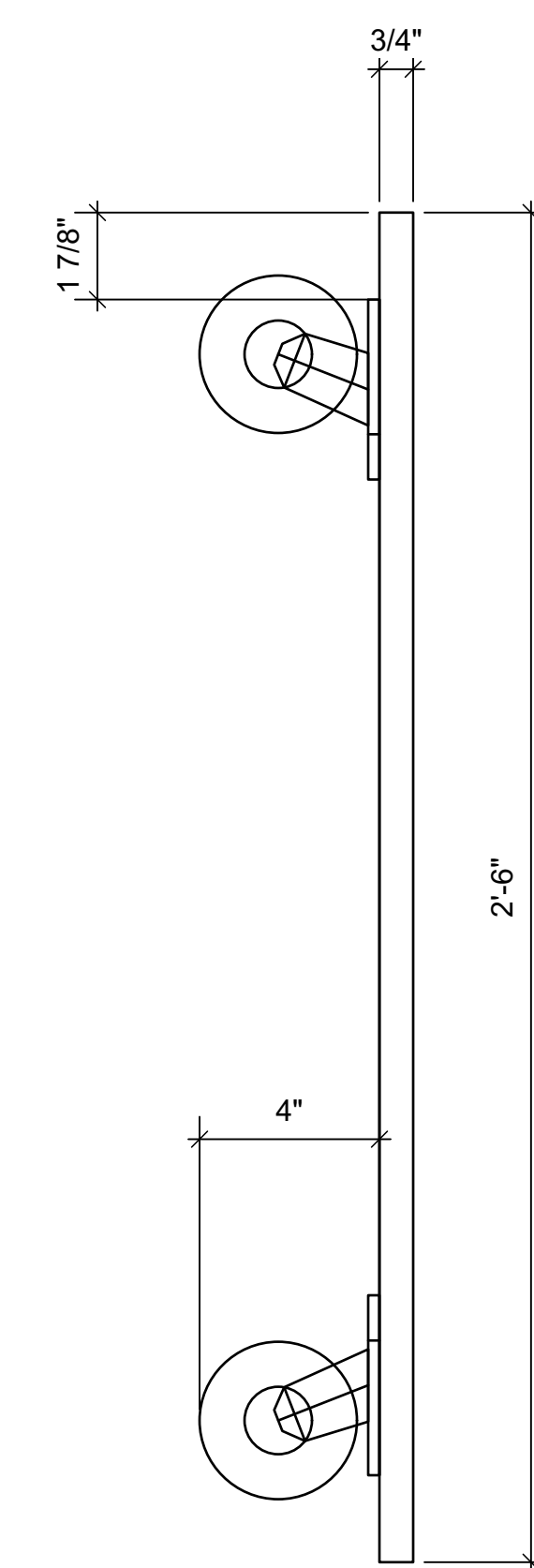
4 SIDE VIEW OF LID
Scale: 3" = 1'-0"



2 FRONT VIEW OF LID
Scale: 3" = 1'-0"



5 TOP VIEW OF BASE
Scale: 3" = 1'-0"



6 SIDE VIEW OF BASE
Scale: 3" = 1'-0"



University of Alabama
School of Theatre and Dance
Marian Galloway Theatre

Teila Vochatzer
PROPS DIRECTOR

THE COLORED MUSEUM
VANITY LIDS & BASES

Directed by
Christian Tripp

Scenic Designer
Soledad Sanchez

Lighting Designer
David Page

Technical Director
Matthew Stratton

Scale
3" = 1'

General Notes

1. Should be built out of 3/4" ply & ripped down 2x4.
2. Glue & Screw.
3. Each half of the lid sits inset to the Vanity base.
4. Use 4" tall castors.
5. Build 2
6. If you have any questions, talk to Teila.

This drawing is confidential. The reproduction or use of ideas, arrangements, designs, and plans are prohibited without written consent of Teila Vochatzer.

Written dimensions will always override scale should a conflict arise.

Responsibility falls solely on the vendors to notify Teila Vochatzer of any discrepancies between this drawing and actual dimensions.

This drawing represents concepts and suggestions only. The design team is not responsible nor held liable for the structural, mechanical or electrical execution of this drawing. Any structural components within this drawing must be approved by a qualified engineer before installation begins. Furthermore any other work done is to be performed by qualified personnel only.

Equipment and installation must conform to all local and federal codes and fire safety regulations.

Plate No.

2 OF 4

November 4, 2021



University of Alabama
School of Theatre and Dance
Marian Galloway Theatre

Teila Vochatzer
PROPS DIRECTOR

THE COLORED MUSEUM
VANITY UNITS
DOOR

Directed by
Christian Tripp

Scenic Designer
Soledad Sanchez

Lighting Designer
David Page

Technical Director
Matthew Stratton

Scale
3" = 1'

General Notes

1. Should be built out of 3/4" PLY & 3/4" MDF.
2. Glue & Screw.
3. All screws should be puttied over & sanded.
4. Overlay Concealed Hinges will be used.
5. DO NOT ATTACH MOULDING UNTIL FABRIC IS ADHERED.
6. Build 2 of each.
7. If you have any questions, talk to Teila.

This drawing is confidential. The reproduction or use of ideas, arrangements, designs, and plans are prohibited without written consent of Teila Vochatzer.

Written dimensions will always override scale should a conflict arise.

Responsibility falls solely on the vendors to notify Teila Vochatzer of any discrepancies between this drawing and actual dimensions.

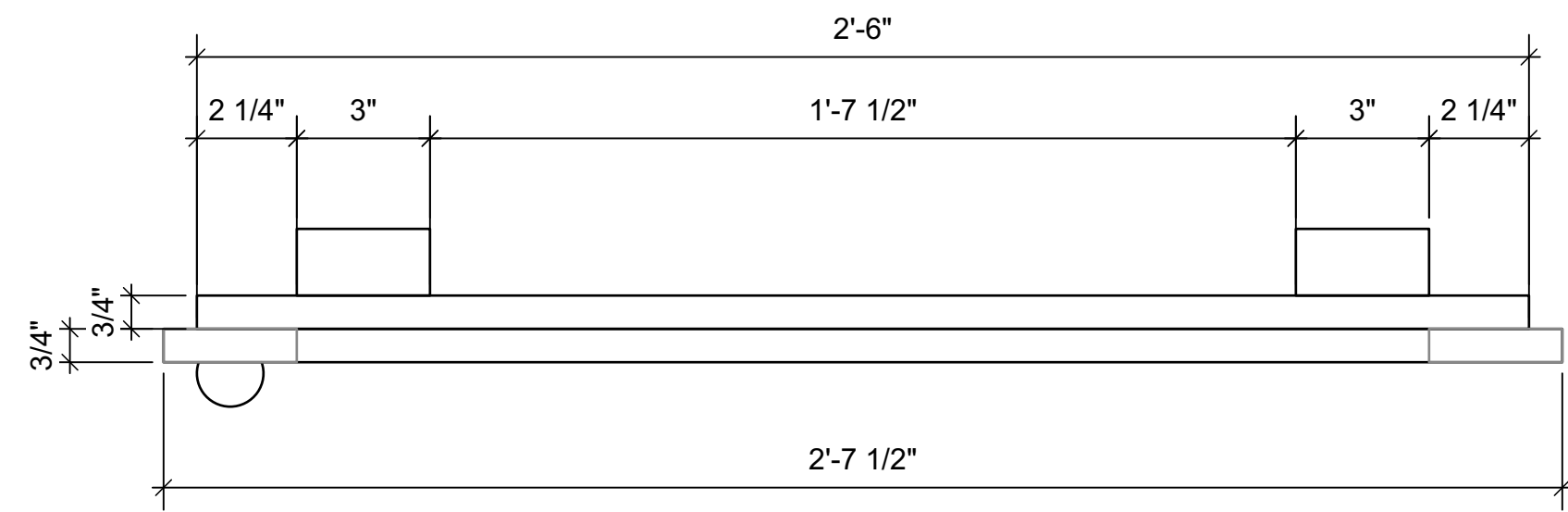
This drawing represents concepts and suggestions only. The design team is not responsible nor held liable for the structural, mechanical or electrical execution of this drawing. Any structural components within this drawing must be approved by a qualified engineer before installation begins. Furthermore any other work done is to be performed by qualified personnel only.

Equipment and installation must conform to all local and federal codes and fire safety regulations.

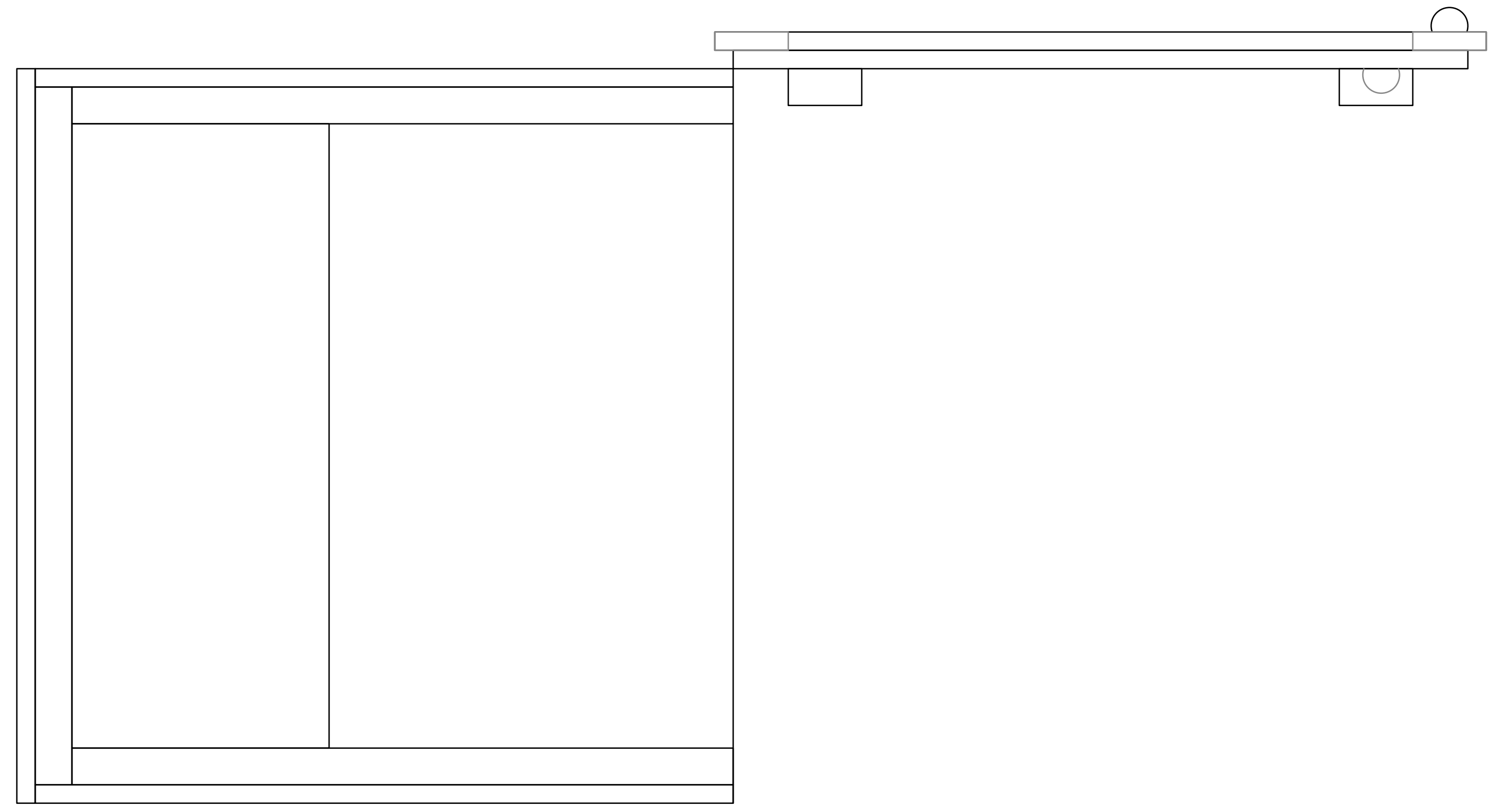
Plate No.

3 OF 4

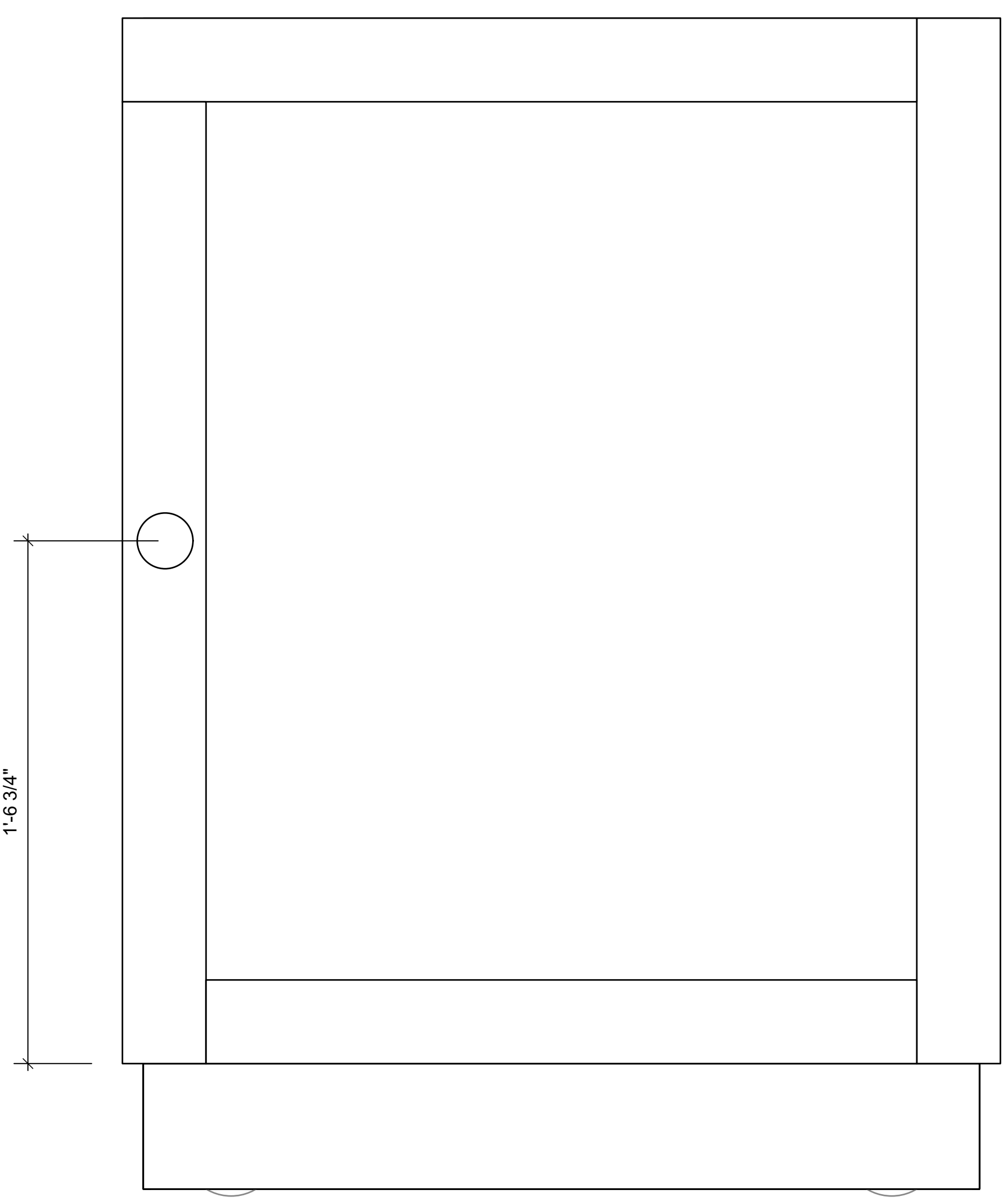
November 4, 2021



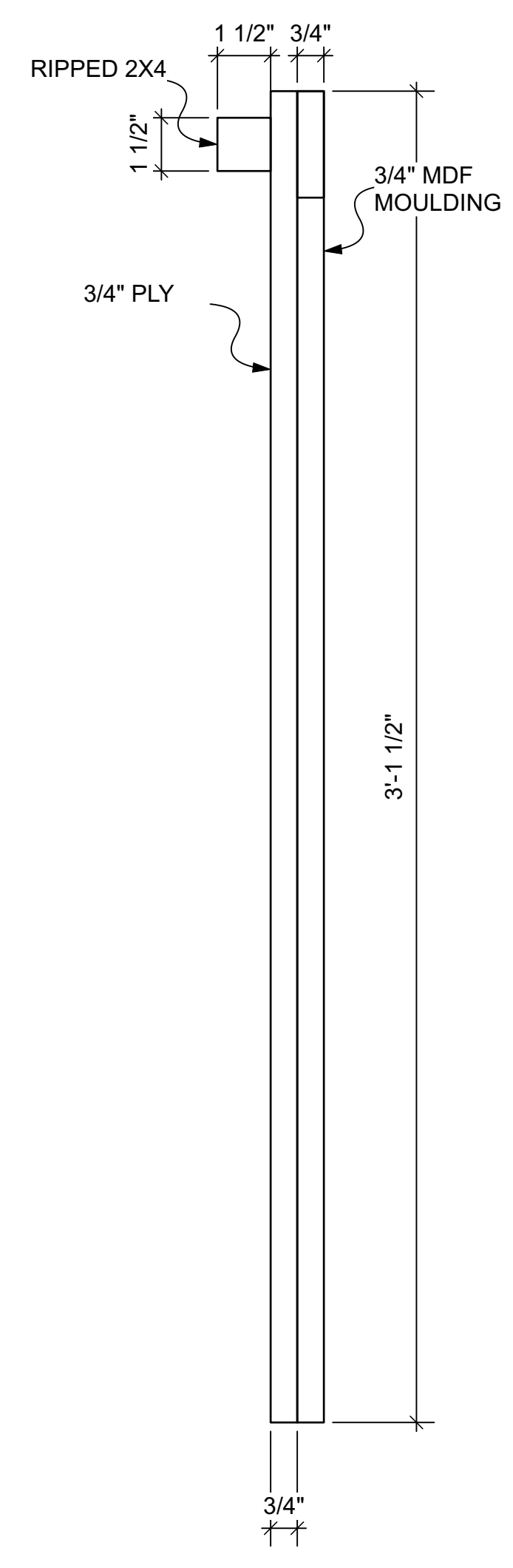
1 **TOP VIEW OF DOOR**
Scale: 3" = 1'-0"



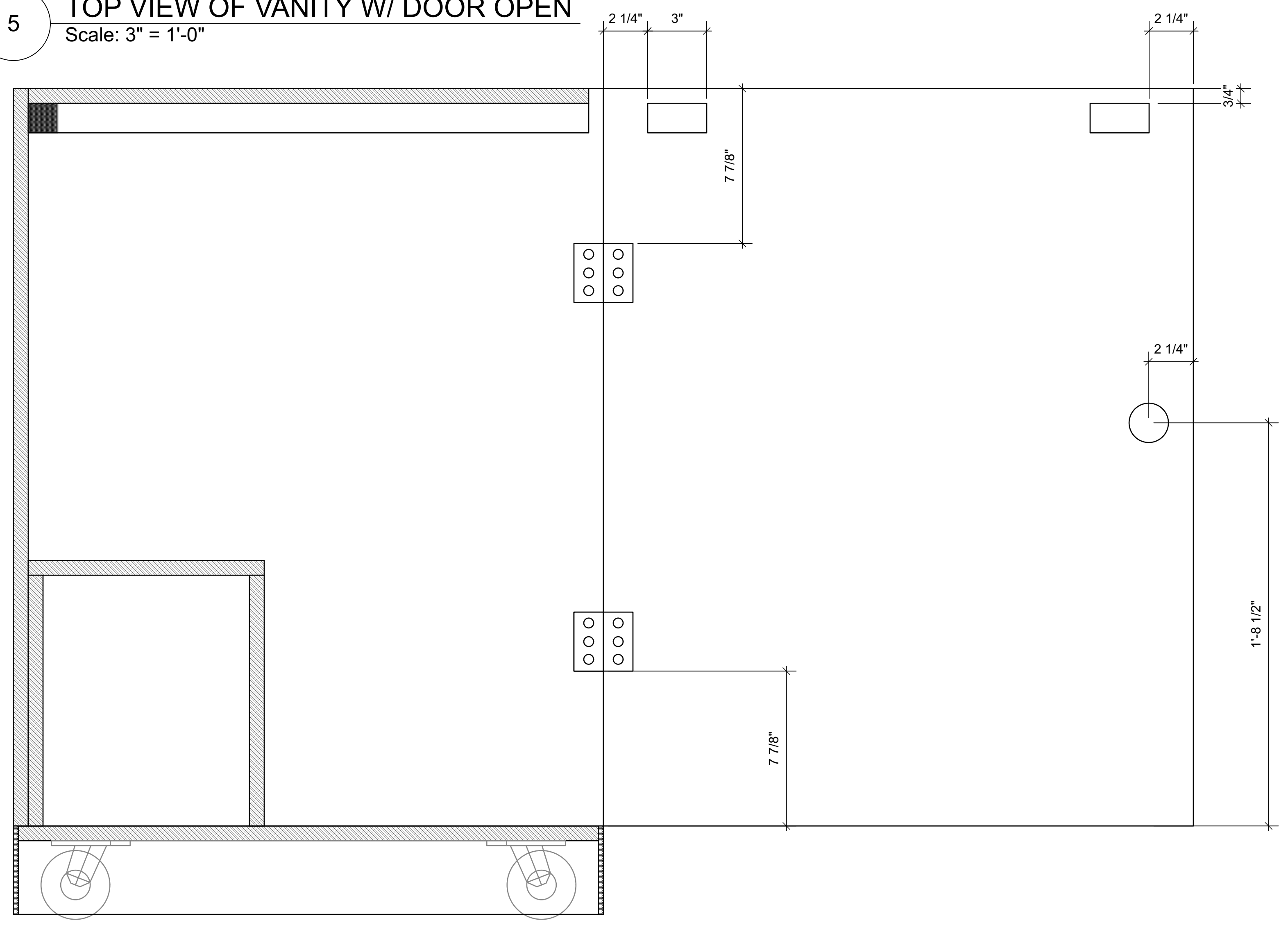
5 **TOP VIEW OF VANITY W/ DOOR OPEN**
Scale: 3" = 1'-0"



2 **FRONT VIEW OF DOOR**
Scale: 3" = 1'-0"



3 **SIDE VIEW OF DOOR**
Scale: 3" = 1'-0"



4 **SECTION VIEW OF VANITY W/ DOOR OPEN**
Scale: 3" = 1'-0"



University of Alabama
School of Theatre and Dance
Marian Gallaway Theatre

Teila Vochatzer
PROPS DIRECTOR

**THE COLORED
MUSEUM**
VANITY UNITS
MOULDING LAYOUT

Directed by
Christian Tripp

Scenic Designer
Soledad Sanchez

Lighting Designer
David Page

Technical Director
Matthew Stratton

Scale
2" = 1'

General Notes

1. Should be built out of 3/4" MDF.
2. Glue & Screw.
3. All screws should be puttied over & sanded.
4. DO NOT ATTACH MOULDING UNTIL FABRIC IS ADHERED.
5. Build 2 of each.
6. If you have any questions, talk to Teila.

This drawing is confidential. The reproduction or use of ideas, arrangements, designs, and plans are prohibited without written consent of Teila Vochatzer.

Written dimensions will always override scale should a conflict arise.

Responsibility falls solely on the vendors to notify Teila Vochatzer of any discrepancies between this drawing and actual dimensions.

This drawing represents concepts and suggestions only. The design team is not responsible nor held liable for the structural, mechanical or electrical execution of this drawing. Any structural components within this drawing must be approved by a qualified engineer before installation begins. Furthermore any other work done is to be performed by qualified personnel only.

Equipment and installation must conform to all local and federal codes and fire safety regulations.

Plate No.

4 OF 4

November 4, 2021

